

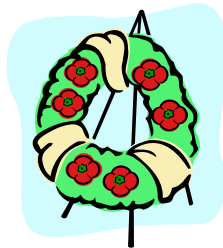


**CPF PEI Board of Directors**

- President Brittany Jakubiec
- Past President Amanda Moore
- VP Nancy Kitson
- Treasurer Maryse Perreault
- Member Tammy Desjardins
- Member Susan Taylor
- Member Kelly Doran
- Executive Director Gail Lecky

**November Important dates**

- Nov. 7 Parent teacher Interviews (no school)
- Nov. 11 Remembrance Day (no school)
- Nov. 21 PEITF Professional Development Day (no school)



Resources For Parents >

Resources For Students >

Resources For Educators >

CPF PEI  
 PO Box 2785  
 Charlottetown, PE  
 C1A 8C4  
 902-368-3703  
 pei.cpf.ca



Please send me E-NEWS by email. Fax 902-628-8062

My email address \_\_\_\_\_

# CPF Prince Edward Island

CANADIAN PARENTS FOR FRENCH

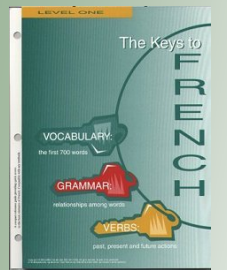
**NEWS**

E-NEWS November 2014 Issue 93

*Providing opportunities for young Canadians to learn and use French*



In a survey of 5000 parents completed in 2008 by the Canadian Council on Learning this finding "As well, the majority of Canadian parents who chose to place their child in a language-immersion program did so out of a desire to improve their future job prospects; this was the most common reason reported (by nearly 60% of parents) when asked why they enrolled their child in an immersion program."



The Keys to French, Levels I, II, and Les Clés, available for \$5 from CPF PEI \$5

This publication is created and distributed by Canadian Parents for French—PEI.

Copyright 2006, CPF-PEI. All rights reserved

Canadian Parents for French is a national network of volunteers which values French as an integral part of Canada and which is dedicated to the promotion and creation of French second language learning opportunities for young Canadians.

JOIN CPF!  
 Help support our great organization working to support French second language opportunities!

**Thinking about French Immersion for your child? Consider these research findings and facts:**



Students whose parents have positive attitudes to learning French tend to do better in French. They also develop a more positive attitude toward French and Francophones. You can play an active role in your child's success in French Immersion; even if you don't speak French, support and encouragement are the biggest factors. Your encouragement and belief in the value of a second language will strengthen your child's learning experience. (the Ontario School Council Support Centre )

Being bilingual helps keep you from losing your mental edge as you age, according to York University psychologist Ellen Bialystok, distinguished research professor with the Faculty of Arts. "Being bilingual is like going to a brain gym," said Bialystok. The article is available at: <http://goo.gl/xyu3aF>

There is an urgent requirement for qualified speakers of languages other than English in areas of science, technology, medicine and global commerce. Oct 2008 National Ipsos Reid survey

**CPF membership application form**

CPF allows one or two adults per family as voting members.  
 New membership  Renewal membership # \_\_\_\_\_  Change of Address

**MEMBERSHIP INFORMATION**

Name \_\_\_\_\_  
 First Member Surname, Given Name Second Member's Surname, Given name

Address: \_\_\_\_\_

Province \_\_\_\_\_ Postal Code \_\_\_\_\_ Home Phone ( ) \_\_\_\_\_

Work Phone ( ) \_\_\_\_\_ Fax ( ) \_\_\_\_\_ E-mail \_\_\_\_\_

School Board \_\_\_\_\_

School(s) \_\_\_\_\_

Local CPF Chapter / Section \_\_\_\_\_

I understand that the personal information collected on this form is for the purpose of forwarding various newsletters and other mailings related to FSL matters as well as fundraising materials.

Occasionally, the CPF membership list may be made available to other groups/agencies to offer members special benefits or education-related information. Use of the list will be carefully regulated and only permitted under a contract specifying confidentiality and one-time authorization. If you do not wish to receive mailings other than directly from CPF, please check this box:

**MEMBERSHIP FEES**

- Best Value! 3 year - \$60 \$ \_\_\_\_\_
- 1 year - \$25 \$ \_\_\_\_\_
- Donation\* \$ \_\_\_\_\_
- Total (No GST) \$ \_\_\_\_\_

65% of your membership fee supports the activities of your local Chapter, 25% supports CPF's work at the branch level and 10% goes to CPF National to partially cover processing costs.

\*DONATION: Designate to: \_\_\_\_\_  
 Your gift in support of CPF is also welcomed and appreciated. All donations are important to us. However due to cost, we will issue tax receipts in January of the following year only to donors who have made donations of more than \$10, unless a receipt for a lesser amount is specifically requested. THANK YOU FOR YOUR SUPPORT! (CPF Charitable Reg. No. 11883 5131 RR0001)

For payment by:  VISA  MasterCard  Cheque enclosed

Name on Card \_\_\_\_\_

Card # \_\_\_\_\_ Expiry \_\_\_\_\_

Date \_\_\_\_\_ Signature \_\_\_\_\_

CPF PEI recognizes and thanks the [Department of Canadian Heritage](#) for its continued financial support of our projects and activities. /CPF PEI désire remercier le [Ministère du Patrimoine canadien](#) pour son soutien financier continu de nos projets et activités.





## French Immersion Kindergarten Parent Information Meetings

Bluefield Family of Schools  
Thursday, November 13, 2014 – 7:00 p.m./Westwood Primary

Charlottetown Rural & Colonel Gray Families of Schools  
Wednesday, November 5, 2014 – 7:00 p.m./Sherwood Elementary  
OR  
Monday, November 10, 2014 – 7:00 p.m./Glen Stewart Primary

Montague, Morell & Souris Families of Schools  
Wednesday, November 12, 2014 – 7:00 p.m. /Montague Cons.

Three Oaks, Kinkora & Kensington Families of Schools  
Tuesday, November 4, 2014 – 7:00 p.m./Parkside Elementary

Westisle Family of Schools  
Monday, November 3, 2014 – 7:00 p.m./Westisle Composite High

The French Immersion Information Sessions are not being held at every elementary school that has French Immersion this year. You may attend any session you are able to and the messages you will hear be the same. Teachers and Principals from the family of schools represented will be in attendance at each of their sessions.

*s'appeler* = to be called,  
to name (oneself).

Il *s'appelle* Adrian en  
anglais et Adrien en  
français.

His name is Adrian in  
English and Adrien in  
French.

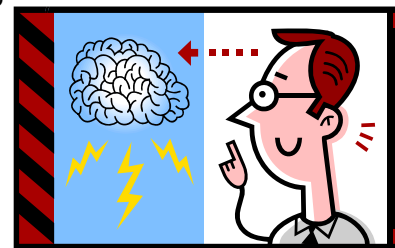


## French Immersion— A Good Choice

The French immersion program is open to all students. If you want your child to develop proficiency in Canada's two official languages, and to learn about another culture, French immersion has a great deal to offer.

- ⇒ Thinking and reasoning skills improve;
- ⇒ English language skills are enhanced;
- ⇒ Appreciation of other people and cultures is increased creating less prejudice toward people who are culturally different;
- ⇒ It improves vocabulary in English, since 40% of English vocabulary comes from French;
- ⇒ It increases problem solving skills and improve memory;
- ⇒ It enhances travel experiences abroad, to the Caribbean, Europe, Africa, and parts of Asia;
- ⇒ It develops listening and learning skills as well as self-discipline;
- ⇒ Creativity is increased with the study of a second language;
- ⇒ It increases cognitive abilities, creating a more flexible thinker;
- ⇒ It enhances knowledge of the first language and the ability to communicate in this language;
- ⇒ It makes learning a third or fourth language much easier;

French immersion can also give your child additional career opportunities. We live in an increasingly global economy, so proficiency in more than one language will be an advantage for career development and will give students a competitive advantage in the job market.



## CPF Programs

**CPF PEI Provincial Concours d'art oratoire**—Teachers and students should be preparing for the annual Concours d'art oratoire for Grade 10–12 students to be held in April 2015. Thousands in scholarships and lots of great prizes and awards! Information will be sent to teachers in October 2014.

**Encounters with Canada**—French Student Excellence Awards— Five lucky students ages 15-17 years old will have a chance to be awarded a week at the Encounters with Canada program starting in January 2015. This information in the schools, **Deadline is December 12, 2014.**

**Treasure Chests**—We gave out 10 new Treasure Chests which were requested at the PEI Teachers Federation display.

**Bilingual Signs**—two signs were offered to each school again this year. The signs will be delivered in November.

**Display at the PEI Teachers Federation Convention**—we were happy to be able to set up a display at the annual convention this year. We tried out a new game “lollipop tree” which proved very popular. Thank you McDonalds, Dairy Queen, Wendy's and Cows for prizes.

**French Immersion Information Sessions**— dates for November, see the schedule on the previous page.

**CPF National AGM**—President Brittany Jakubiec, Past President Amanda Moore, KISH Chapter Grace Haslam, Glen Stewart Chapter Danielle Boyce and Westwood Chapter Ricardo Angel attended.

**Open House at KISH**—Parents are invited to an open house at KISH to meet teachers and students in the French Immersion programs. November 6 at 7:30 right after meet the teacher.

**Salut Word search winners**—Michelle Pineau-Campbell's class at Alberton Elementary was Alexis Murray, Lucy Ryan's class at Elm Street was Drew Murphy, and Melanie Gallant's class at Somerset was Tyson McCardle.



## School Boards seeking French tutors/subs

Parents looking for tutors should contact the English Language School Board. If you are a teacher and want to sub or want to tutor you should register with the school board at 902-368-6825 .

## Opportunity for bilingual youth: Senate program

<http://www.parl.gc.ca/information/about/programs/senpages/senpages-e.htm>

## Tips for language learning

Invite friends to a party with invitations in your second official language!

Invite tes amis à une fête.. envoie tes invitations dans ta langue seconde officielle!

## FRENCH VOCABULARY

[French Word-A-Day](#)

horse is le cheval (This sounds like SHOVEL) ..  
.... imagine a Knight on a horse with a SHOVEL.

